



WORLD CONGRESS OF
THE INTERNATIONAL
FEDERATION FOR CANCER
PREVENTION AND COLPOSCOPY



19TH CONGRESS OF
IFCPC
PARIS 2026

4 > 6 JUNE 2026

VERSAILLES - FRANCE
PALAIS DES CONGRÈS



WORKING TO ELIMINATE
LOWER GENITAL TRACT CANCERS

Reserved Cell Proliferative Pattern at Clear Margins of LEEP as a Marker of HPV Persistence and CIN2+ Recurrence

Muryzina I., Gargin V., Bilodid O., Alekseeva V., Lazurenko V.

Background & Hypothesis

Background

- CIN2+ → HPV-driven but heterogeneous
- Recurrence persists after LEEP
- Early detection remains limited



Aim:

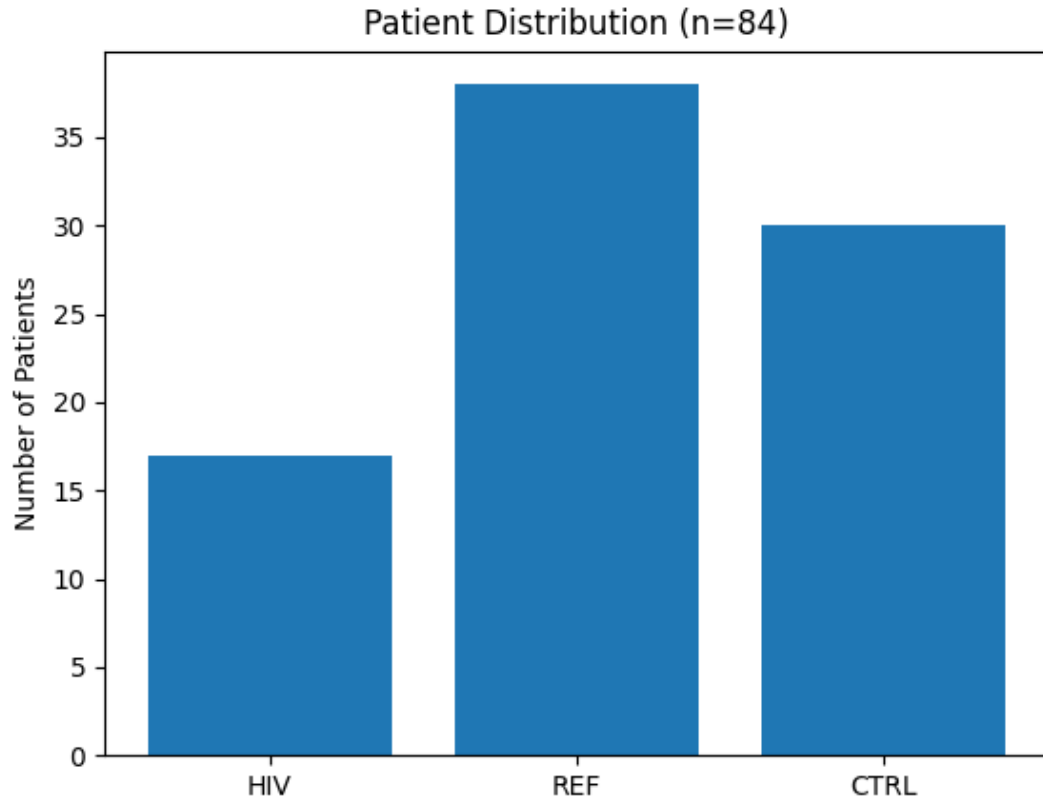
1. Assess RC at clear margins
2. Compare: HIV vs Refugees vs Controls
3. Link RC proliferation → CIN2+ recurrence

Rationale

- Reserved cells (RC) = potential HPV reservoir
- Proliferation may indicate persistence



Material and Methods



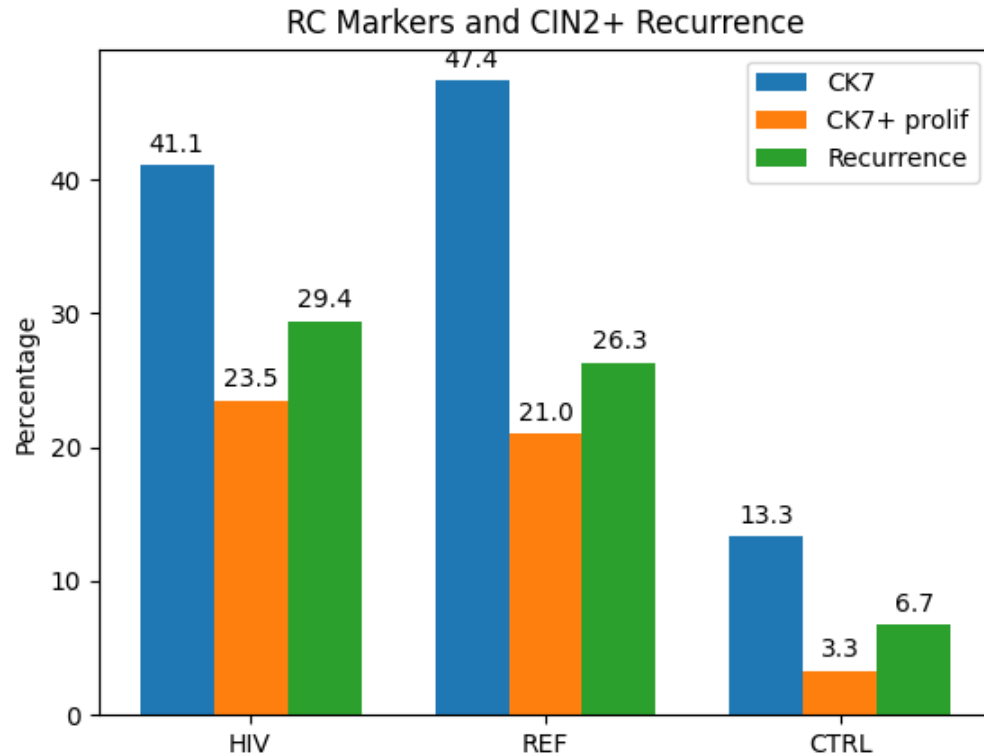
Methods

1. Histology: Hematoxylin–eosin staining
2. Immunohistochemistry: CK7 → reserved cells identification CK19, p63, Ki67 → proliferative activity

Analysis

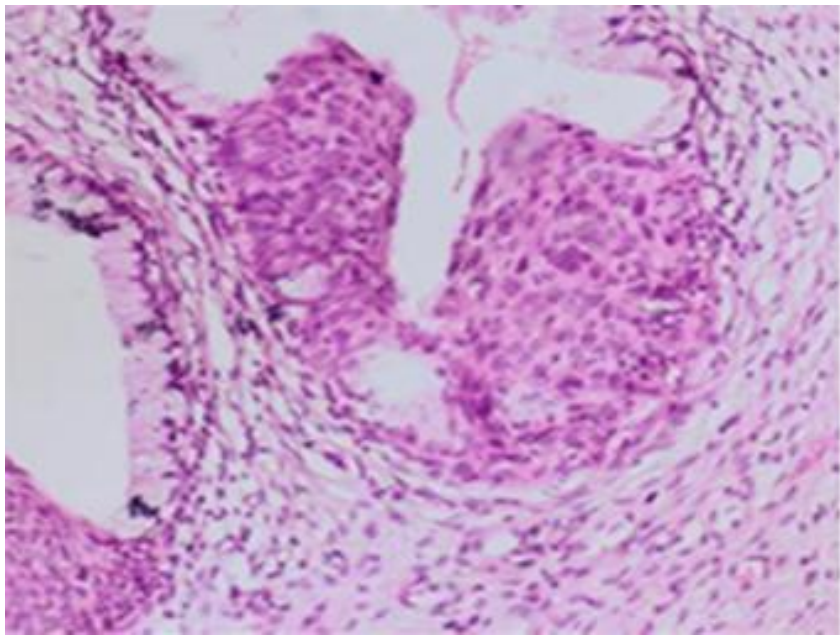
- Marker expression at clear margins
- Measurement uncertainty (95% CI, k=2)

Results

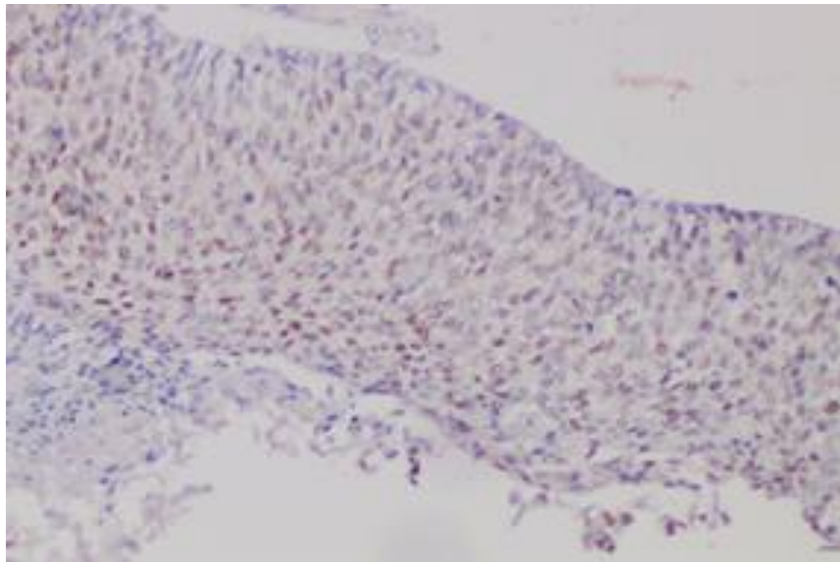
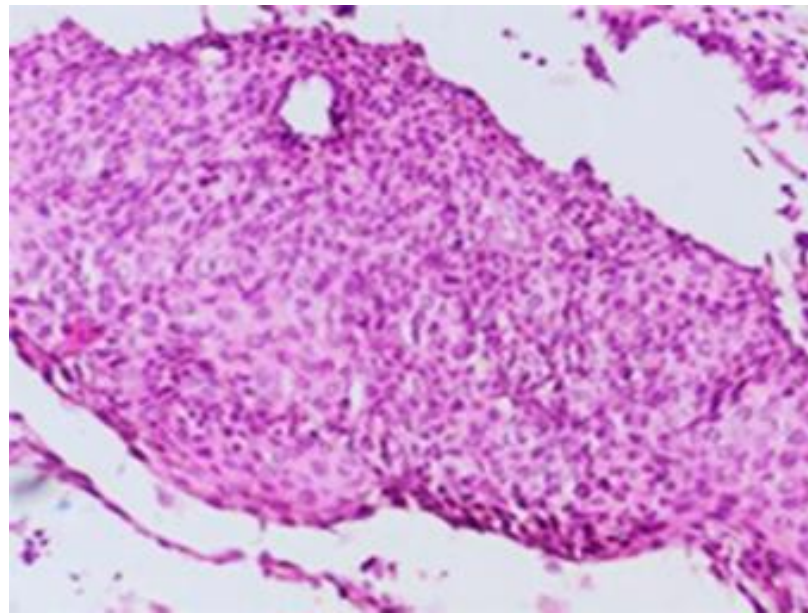


- Higher in HIV & REF
- Similar pattern: HIV \approx REF
- Recurrence only in CK7+

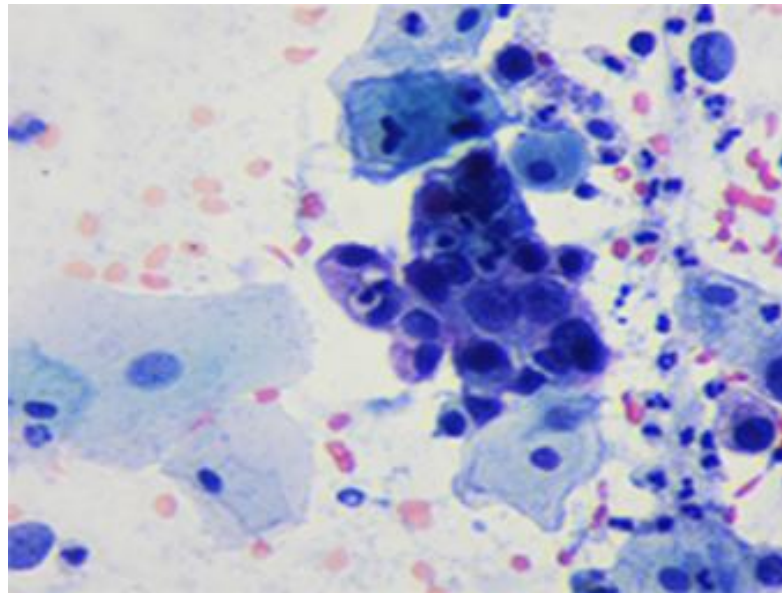
1. HIV and refugee groups show comparable biological behavior
2. Chronic stress may act similarly to immunosuppression RC proliferation at margins likely represents
3. Latent HPV reservoir early step of recurrence development



CIN2, H&E, ×200



Ki-67, IHC, ×100



Pap test, moderate dysplasia, ×400

**Thank you
for your
Attention !**