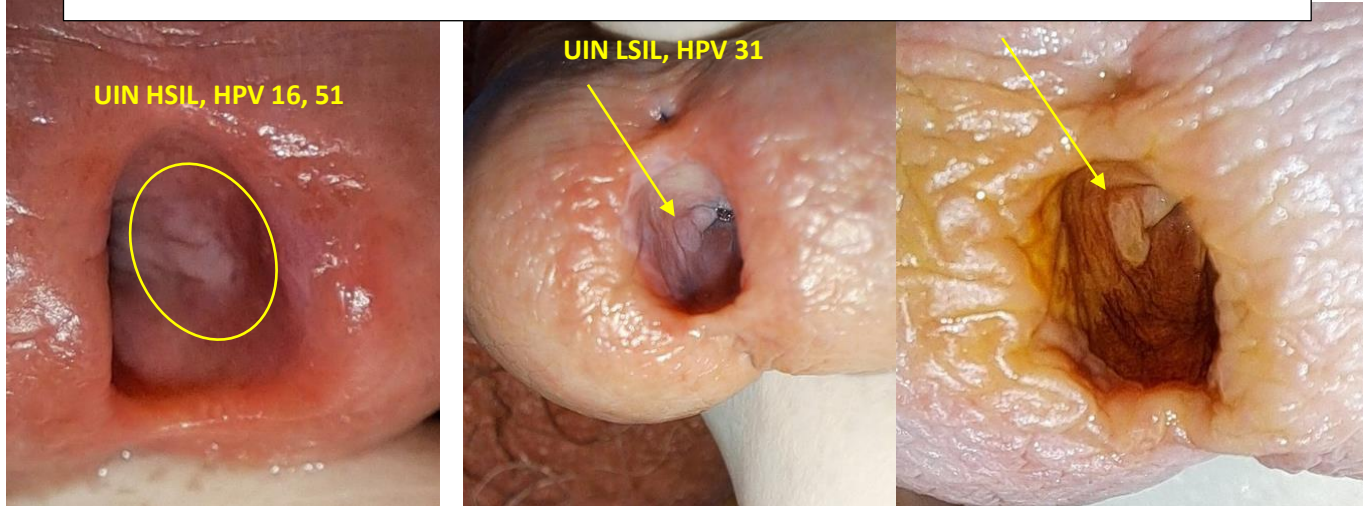


Acidophilia was observed in 103 men (61.7%), with histological confirmation of UIN in 92 cases (89%).



Correlation with Female Partner's Diagnosis

The prevalence of UIN in male partners correlated strongly with the severity of their female partner's lesions: 28% women with normal reflex cytology HPV (+) had a male partner with UIN, this rate rose to 51% for women with LSIL.

to 69% for women with HSIL.

The following report presents a correlation between the cervico-vaginal status of HPV-positive women and the clinico-histo-virological data of their male partners. The identification of acidophilia in the distal urethra suggests a UIN primarily associated with high-risk HPV

Women		204 Men							
Oncogenic HVP (+) persistent	Nbr patient	37 HPV (-)		167 HPV (+)					
		Absence Acidowhite	Acidowhite	103 Urethral Acidowithe Histology			Follow up Control		Lost and followup
				UIN I	UIN III	Normal	Absence Acidowhite	Acidowhite	
Normal Pap cytology	90	20	9	24	1	3	3	19	11
LSIL	49	2	2	24	1	3	0	12	5
HSIL	55	0	4	37	1	5	0	7	1
VaIN	10	0	0	4	0	0	0	4	2
Total	204	22	15	89	3	11	3	42	19

Conclusions: This highlights the importance of targeted screening in men, particularly the partners of women with persistent HPV infection, in order to optimise the management of couples at risk.

Recommendation: Women with persistent high-risk HPV cervical lesions have male partners who develop urethral intraepithelial neoplasia, detected by colposcopy, associated with high-risk HPV, suggesting the persistence of HPV.